



# *ZX Series*

## **Self Priming Centrifugal Pump**



**SHANGHAI ZHILI PUMP MFR CO.,LTD**

## **Descriptions**

ZX series self priming centrifugal pump is design under the basic of absorb international advanced technology.

This pump is advanced of simple structure, convenient operation and maintenance, high efficiency, long life. So excellent self-priming performance.that no need foot valve in the pipeline. It just needs to have amount of liquid in pump for self-priming before starting pump. So it simplify pipeline system and improves working condition.

## **Application**

1. Suitable for environment protection,construction,fire fighting,chemical pharmacy,printing,dyeing,brewage,power plant,electroplate,paper making, washing for mining and cooling for equipment.
2. Application as sprayer equipped with beam nozzle that turning water into little drop irrigation for farm, garden,etc.
3. It is suitable for clear water,sea water,acid or alkali chemical medium and slurry (viscosity  $\leq 100$  centipois, consistency of solid can not exceed 30% of total medium).
4. It is the ideal machine to delivery slurry to press filters .

## **Parameter range:**

Capacity: 1.5-800m<sup>3</sup>/h

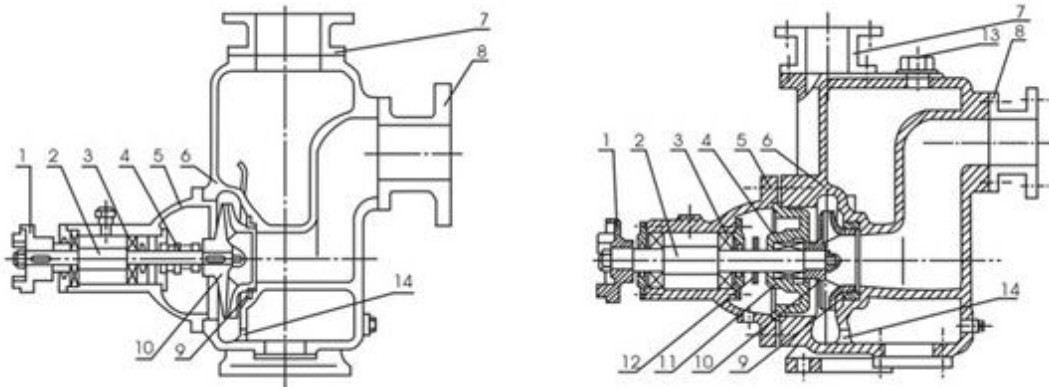
Head: 3-125m

Caliber: 1-12inch

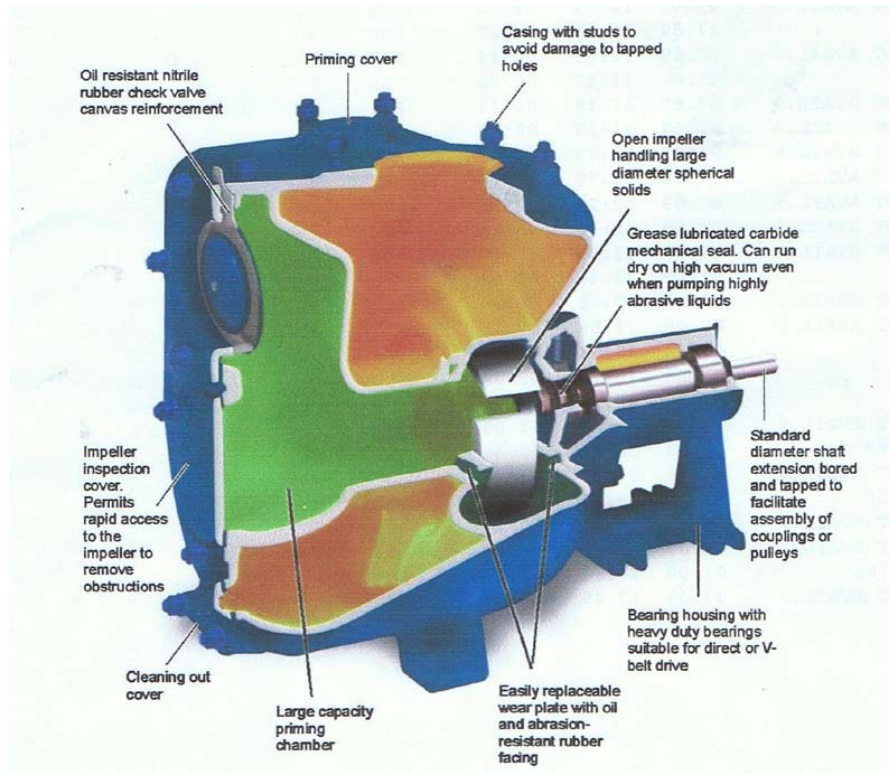
Temperature range:  $\leq 80$ C

Max system working pressure: 16 bar

# Structure

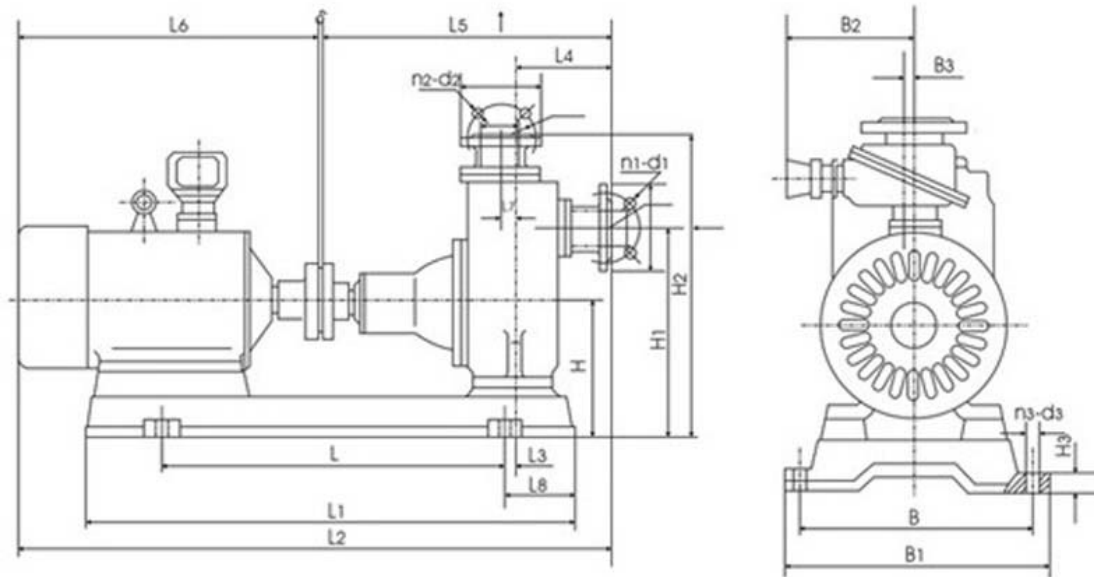


No.	Name	Material	No.	Name	Material
1	coupling	FC20	8	inlet seat	FC20
2	shaft	SS	9	front seal ring	FC20
3	bearing	Hard alloy	10	impeller	FC20
4	Shaft seal	M. S	11	back cover	FC20
5	bearing house	FC20	12	Water proof ring	FC20
6	casing	FC20	13	Filling plug	FC20
7	outlet seat	FC20	14	Liquid return plug	FC20



Model	Capacity		Head	Suction	Speed	Self priming	Power(KW)		Caliber(mm)	
	m3/h	L/S	m	m	r/min	min/5m	Shaft	Motor	Inlet	Outlet
25ZX3.2-20	3.2	0.9	20	6.5	2900	1.9	0.46	0.75	25	25
25ZX3.2-32	3.2	0.9	32	6.5	2900	1.8	0.8	1.1	25	25
40ZX6.3-20	6.3	1.8	20	6.5	2900	1.9	0.87	1.1	40	32
40ZX10-40	10	2.8	40	6.5	2900	1.5	2.7	4	40	40
50ZX15-12	15	4.2	12	6.5	2900	2.4	1.1	1.5-2	50	50
50ZX18-20	18	5	20	6.5	2900	1.9	1.8	2.2	50	40
50ZX12.5-32	12.5	3.5	32	6.5	2900	1.5	2.1	3	50	50
50ZX20-30	20	5.6	30	6.5	2900	1.5	2.6	4	50	50
50ZX14-35	14	3.9	35	6.5	2900	1.5	2.7	4	50	50
50ZX10-40	10	2.8	40	6.5	2900	1.5	2.7	4	50	50
50ZX12.5-50	12.5	3.5	50	6.5	2900	1.4	4.3	5.5	50	50
50ZX15-60	15	4.2	60	6.5	2900	1.3	6.2	7.5	50	50
50ZX20-75	20	5.6	75	6.5	2900	1.3	9.8	11	50	50
65ZX30-15	30	8.3	15	6.5	2900	2	1.9	3	65	50
65ZX25-32	25	6.9	32	6	2900	1.5	4.4	5.5	65	50
80ZX35-13	35	9.7	13	6	2900	3.4	1.9	3	80	65
80ZX43-17	43	12	17	6	2900	1.8	3.1	4	80	65
80ZX40-22	40	11.1	22	6	2900	1.9	4.4	5.5	80	65
80ZX50-25	50	13.9	25	6	2900	1.5	5.2	7.5	80	80
80ZX50-32	50	13.9	32	6	2900	1.5	6.8	7.5	80	80
80ZX60-55	60	16.7	55	6	2900	1.5	15	18.5	80	80
80ZX60-70	60	16.7	70	6	2900	1.2	20.1	22	80	80
100ZX100-20	100	27.8	20	6	2900	1.8	7.8	11	100	100
100ZX100-40	100	27.8	40	6	2900	1.8	16.3	22	100	100
100ZX100-65	100	27.8	65	6	2900	1.8	27.7	30	100	100
100ZX70-75	70	19.4	75	6	2900	1.8	24.2	30	100	100
150ZX160-55	160	47.2	55	5	2900	1.8	39.2	45	150	100
150ZX170-65	170	47.2	65	5	2900	1.3	46.3	55	150	100
150ZX160-80	160	44.4	80	5	2900	1.2	53.6	55	150	100
200ZX400-32	400	111.1	32	5	1450	2	52.1	55	200	200
200ZX280-63	280	77.8	63	5	1450	1.5	73.9	90	200	150
200ZX350-65	350	97.2	65	5	1450	1.5	97.2	110	200	150
250ZX550-32	550	152.8	32	5	1450	2	72.3	75	250	250
250ZX400-50	400	111.1	50	5	1450	2	80	90	250	250
250ZX450-55	450	125	55	5	1450	2	102.1	110	250	250
250ZX400-75	400	111.1	75	5	1450	1.5	125.6	132	250	250
300ZX600-32	600	166.7	32	5	1450	2	79.2	90	300	300
300ZX500-50	500	138.9	50	5	1450	2	104.6	110	300	300
300ZX550-55	550	152.8	55	5	1450	2	117.6	132	300	300

## Dimensions



## Sheet 1

model	Motor		L1	L2	L3	L4	L5	L6	L7	L8	δ	H	H1
	model	power (kw)											
<b>25ZX3.2-20</b>	Y801-2	0.75	320	615	75	155	450	339	38	155	2	195	300
<b>25ZX3.2-32</b>	Y802-2	1.1	350	580	45	125	391	339	coincide	115	2	200	320
<b>40ZX6.3-20</b>	Y802-2	1.1	320	615	75	155	450	339	38	150	2	195	300
<b>40ZX10-40</b>	Y112M-2	4	500	795	33	173	515	470	coincide	145	3	220	380
<b>50ZX15-12</b>	Y90S-2	1.5	320	615	80	131	406	369	coincide	150	2	185	305
<b>50ZX18-20</b>	Y90L-2	2.2	440	680	25	152	436	394	coincide	120	3	193	323
<b>50ZX12.5-32</b>	Y100L-2	3	440	680	50	143	445	440	coincide	120	2	213	353
<b>50ZX20-30</b>	Y112M-2	4	500	795	33	173	515	470	coincide	145	3	220	380
<b>50ZX14-35</b>	Y112M-2	4	500	795	33	173	515	470	coincide	145	3	220	380
<b>50ZX10-40</b>	Y112M-2	4	440	680	55	143	445	470	coincide	120	2	213	353
<b>50ZX12.5-50</b>	Y132S1-2	5.5	480	870	74	142	454	520	coincide	195	3	220	380
<b>50ZX15-60</b>	Y132S2-2	7.5	510	870	60.5	230	541	520	coincide	180	3	270	440
<b>50ZX20-75</b>	Y160M1-2	11	600	1000	87.5	230	541	668	coincide	200	3	280	450
<b>65ZX30-15</b>	Y100L-2	3	440	680	36	135	421	440	coincide	120	3	203	333
<b>65ZX25-32</b>	Y132S1-2	5.5	480	870	63	148	466	520	coincide	195	3	220	370
<b>80ZX35-13</b>	Y100L-2	3	440	680	42	145	441	440	coincide	120	3	203	343
<b>80ZX43-17</b>	Y112M-2	4	500	795	25	152	476	470	coincide	145	3	220	370
<b>80ZX40-22</b>	Y132S1-2	5.5	480	870	61	152	476	520	coincide	195	3	220	370
<b>80ZX50-25</b>	Y132S2-2	7.5	480	870	70.5	270	557	520	70	195	3	225	406

<b>80ZX50-32</b>	Y132S2-2	7.5	480	870	70.5	270	557	520	70	200	3	225	406
<b>80ZX60-55</b>	Y160L-2	19.5	600	1025	95	200	558	708	coincide	195	3	280	450
<b>80ZX60-70</b>	Y180M-2	22	730	1170	38	211	656	745	coincide	200	3	300	490
<b>100ZX100-20</b>	Y160M1-2	11	600	1000	87.5	202	575	668	coincide	200	3	260	420
<b>100ZX100-40</b>	Y180M-2	22	660	1060	115	215	647	743	coincide	270	2	320	490
<b>100ZX100-65</b>	Y200L1-2	30	780	1320	116	230	743	820	coincide	270	3	335	555
<b>100ZX70-75</b>	Y200L1-2	30	780	1320	116	230	743	820	coincide	250	3	335	555
<b>150ZX160-55</b>	Y225M-2	45	950	1450	30	360	900	885	coincide	275	3	390	760
<b>150ZX170-65</b>	Y250M-2	55	950	1500	91	360	900	950	coincide	275	3	390	760
<b>150ZX160-80</b>	Y250M-2	55	950	1500	91	362	900	950	coincide	360	3	390	800
<b>200ZX400-32</b>	Y250M-2	55	900	1620	165	470	1127	953	coincide	430	3	440	900
<b>200ZX280-63</b>	Y280M-4	90	1000	1860	210	430	1180	1060	coincide	430	3	500	935
<b>200ZX350-65</b>	Y315S-4	110	1000	1860	230	430	1180	1270	coincide	430	2	535	1110
<b>250ZX550-32</b>	Y280S-4	75	1000	1860	195	875	1604	1037	coincide	430	3	470	1100
<b>250ZX400-50</b>	Y280M-4	90	1000	1860	240	792	1542	1060	coincide	400	2	500	1100
<b>250ZX450-55</b>	Y315S-4	110	1200	2000	210	792	1542	1270	coincide	400	2	500	1150
<b>250ZX400-75</b>	Y315M-4	132	1200	2000	195	800	1647	1350	coincide	430	3	550	1230
<b>300ZX600-32</b>	Y280M-4	90	1000	1860	195	995	1724	1081	coincide	400	3	470	1210
<b>300ZX500-50</b>	Y315S-4	110	1200	2000	170	890	1690	1270	coincide	400	2	550	1210
<b>300ZX550-55</b>	Y315M-4	132	1200	2000	170	890	1690	1350	coincide	400	2	550	1210

## Sheet 2

model	H2	H3	B	B1	B2	B3	$\phi$	$\phi$ 1	$\phi$ 2	$\phi$ 3	$\phi$ 4	$\phi$ 5	n1-d1	n2-d2	n3-d3
<b>25ZX3.2-20</b>	436	20	280	320	225	4	25	75	100	25	75	100	4-12	4-12	4-14
<b>25ZX3.2-32</b>	450	15	300	330	225	coincide	25	75	100	25	75	100	4-12	4-12	4-12
<b>40ZX6.3-20</b>	436	20	280	320	225	coincide	40	100	130	32	100	120	4-14	4-14	4-14
<b>40ZX10-40</b>	530	30	370	410	225	coincide	40	100	130	40	110	130	4-14	4-14	4-14
<b>50ZX15-12</b>	436	20	280	360	225	4.5	50	110	140	50	110	140	4-14	4-14	4-14
<b>50ZX18-20</b>	475	25	320	360	225	7	50	110	140	50	110	140	4-14	4-14	4-14
<b>50ZX12.5-32</b>	503	25	320	360	225	5	50	110	140	50	110	140	4-14	4-14	4-14
<b>50ZX20-30</b>	530	30	370	410	225	coincide	50	110	140	50	110	140	4-14	4-14	4-14
<b>50ZX14-35</b>	530	30	370	410	225	coincide	50	110	140	50	110	140	4-14	4-14	4-14
<b>50ZX10-40</b>	503	25	320	360	225	5	50	110	140	50	110	140	4-14	4-14	4-14
<b>50ZX12.5-50</b>	540	30	360	404	240	5	50	110	140	50	110	140	4-18	4-18	4-18
<b>50ZX15-60</b>	600	25	380	410	240	8	50	125	160	50	125	160	4-18	4-18	4-18
<b>50ZX20-75</b>	630	25	415	445	240	8	50	125	160	50	125	160	4-14	4-14	4-18

<b>65ZX30-15</b>	473	25	320	360	225	8	65	130	160	50	110	140	4-18	4-18	4-14
<b>65ZX25-32</b>	530	30	360	404	240	8	65	130	160	50	110	140	4-18	4-18	4-14
<b>80ZX35-13</b>	493	25	320	360	225	9	65	150	185	65	130	160	4-18	4-18	4-14
<b>80ZX43-17</b>	530	30	370	410	225	12	80	150	185	65	130	160	4-18	4-18	4-18
<b>80ZX40-22</b>	530	30	360	404	240	12	80	150	185	65	130	160	4-18	4-18	4-18
<b>80ZX50-25</b>	595	30	360	404	240	coincide	80	160	195	80	160	195	4-18	4-18	4-18
<b>80ZX50-32</b>	595	30	360	404	240	coincide	80	160	195	80	160	195	4-18	4-18	4-18
<b>80ZX60-55</b>	655	25	425	445	240	10	100	160	195	80	160	195	4-18	4-18	4-18
<b>80ZX60-70</b>	705	30	460	510	240	10	100	160	195	80	160	195	4-18	4-18	4-18
<b>100ZX100-20</b>	590	30	425	596	240	coincide	100	170	210	100	170	250	4-18	4-18	4-18
<b>100ZX100-40</b>	710	25	460	510	240	12	100	170	210	100	170	210	8-18	8-18	4-18
<b>100ZX100-65</b>	785	30	546	596	290	14	150	180	215	100	180	215	8-18	8-18	4-19
<b>100ZX70-75</b>	785	30	546	596	290	14	150	180	215	100	180	215	8-18	8-18	4-19
<b>150ZX170-55</b>	990	30	560	620	290	coincide	150	180	215	100	180	215	8-23	8-23	4-19
<b>150ZX170-65</b>	990	30	650	700	290	coincide	200	180	215	100	180	215	8-23	8-23	4-19
<b>150ZX150-80</b>	990	30	650	700	290	coincide	200	180	215	100	180	215	8-23	8-23	4-19
<b>200ZX400-32</b>	1170	30	710	770	290	30	200	280	315	200	280	315	8-18	8-18	4-19
<b>200ZX280-63</b>	1220	40	760	840	330	22	250	240	280	150	240	280	8-23	8-23	4-25
<b>200ZX350-65</b>	1255	40	760	840	330	22	250	240	280	150	240	280	8-23	8-23	4-25
<b>250ZX550-32</b>	1290	30	760	840	330	35	250	335	340	250	335	370	12-18	12-18	4-25
<b>250ZX400-50</b>	1300	40	760	840	330	25	250	350	390	250	350	390	12-23	12-23	4-25
<b>250ZX450-55</b>	1300	40	900	980	400	25	250	350	390	250	350	390	12-23	12-23	4-25
<b>250ZX400-75</b>	1420	40	900	980	400	24	250	350	390	250	350	390	12-23	12-23	4-25
<b>300ZX600-32</b>	1330	30	760	840	330	35	300	395	435	300	395	435	12-23	12-23	4-25
<b>300ZX500-50</b>	1440	40	900	980	400	30	300	400	440	300	400	440	12-23	12-23	4-25
<b>300ZX550-55</b>	1440	40	900	980	400	30	300	400	440	300	400	440	12-23	12-23	4-25